



Company Profile

Professional Graphics and Solutions

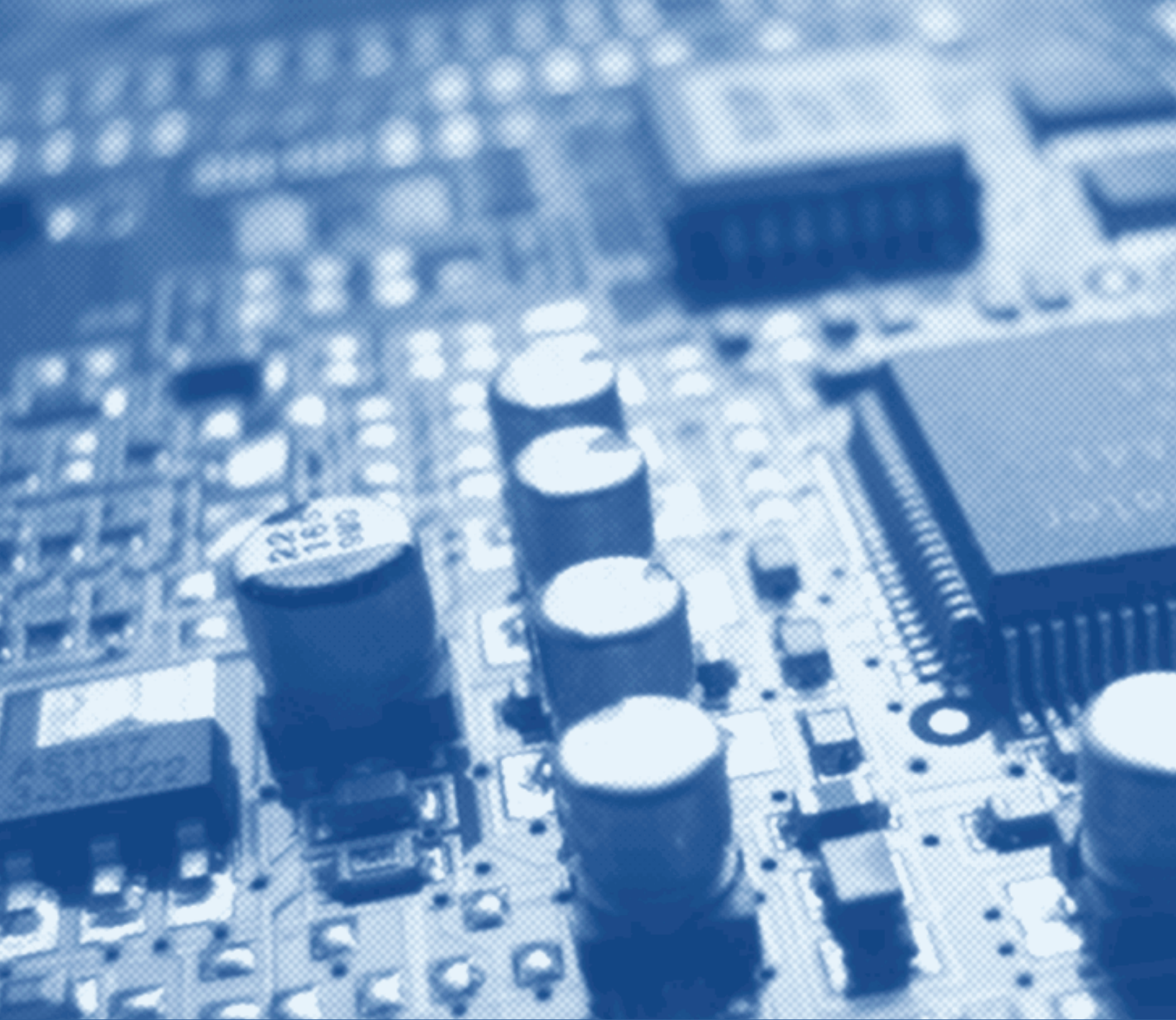
Overview

Exxact Corporation was founded in 1992 on the simple idea of bringing emerging technologies to its customers. Since then, Exxact has grown into a global, value-added distributor of professional workstation graphics cards and a manufacturer of high performance computing (HPC) solutions.

As a leading supplier of ATI FirePro™ and Nvidia® Quadro® professional workstation graphics cards, Exxact has built its reputation by providing not only the most comprehensive inventory and competitive pricing in the industry, but also providing a total commitment to customer satisfaction. It has always been our mission to be a true value-added distributor by providing services beyond warehousing and transport to build strong and sustainable customer relationships. We pride ourselves on our extensive product knowledge and unparalleled customer support, allowing our customers the unique opportunity to increase and sustain business through personalized service, life cycle management, product allocation, and EOL product sourcing. Our emphasis on a complete customer experience has allowed Exxact to become a preeminent supplier of workstation graphics cards, including being the #1 distributor of ATI FirePro™ in North America.

In addition to distribution, Exxact specializes in HPC deployments by developing and manufacturing innovatively designed and expertly engineered high performance computing platforms that include workstations, servers, clusters, storage, and personal supercomputing solutions. Each of our solutions is fully customizable and precisely built to provide groundbreaking performance, flawless design, and unrivaled quality for total customer satisfaction and product assurance. Exxact also offers training, services, and software that allow its customers the ability to adopt and deploy many-core technologies such as GPU computing. In partnership with CAPS Enterprise, Exxact provides HMPP, a source-to-source compiler that gives software developers easy access to manycore systems by allowing a single version of a given application to be developed, ported, maintained, and deployed on several manycore systems, including those integrating both CPUs and GPUs.

With a customer base exceeding 3,000 customers around the world, Exxact's products and solutions serve a wide range of computationally intensive applications, including video games, film production, broadcasting, industrial design, financial modeling, space exploration, and medical imaging.



Distribution

Distribution of Professional Workstation Graphics Cards

■ Value-Added Distribution

As a focused and value-added distributor of professional workstation graphics cards, Exact is dedicated to supplying our customers with not only the latest products and technologies, but also with unsurpassed customer service and support as well.

Our product focus is our customers' advantage as we are able to deliver an intimate knowledge of products and technologies that our competitors simply cannot match. Our thorough understanding of advanced technologies and products enable us to provide expertise and experience to our customers at every stage of the sales process, including consultancy, design, implementation and support. In understanding the needs of our customers, we can help them improve sales, grow revenue, increase response time and add long-term value.

In addition, we view inventory as a fundamental part of our business strategy. We invest the time to understand each and every one of our customers and how our products fit their business, so we can stock more products and deliver more efficiently than anyone else. Our product focus has allowed Exact to become the leading supplier of professional workstation graphics cards, selling over 10,000 graphics cards per month.

1992 Exact is established

1994 Becomes a distributor for ATI

1997 Shifts focus to Professional Workstation Graphics

2007 Becomes the No.1 distributor of ATI FirePro in North America

2011 Reaches monthly sale volume of 10,000 graphics cards

■ Life Cycle Management

With the technology industry continuing to evolve at an ever increasing rate and product life cycles continuing to get shorter, Exxact's support of lifecycle management has become an increasingly critical element in the competitive strategy of our customers. In order to enhance supply chain efficiencies, Exxact offers our customer flexible product scheduling solutions to assist them in managing their component supply forecasts. Exxact will take position of last-time buy components on our customer's behalf and schedule to ship to our customers based on their production demand. This enables our customers to free up valuable cash assets, redirect personnel on other critical initiatives, and save money on internal soft costs while remaining confident in the future supply and quality of their last-time buy technologies. With additional support for product qualification, roadmap information, and product allocation, Exxact's value-added services enable our customers to minimize time to market, improve order fill rates, align inventory forecasts to market demand, minimize the risk of shortages or overages during production transitions, and lower operation costs.

■ End-of-Life Management & Sourcing

At Exxact, we understand that new product designs can change the functionality of the product and lead to huge problems somewhere down the value-chain. Added to a ton of effort spent in qualifications, the whole process is downright painful for customers. Exxact has spent decades forging relationships with global verified suppliers and the OEM community in order to develop our unique and diverse supply model. These relationships, coupled with our proprietary sourcing knowledgebase, enable us to often procure these components and help our customers to resolve material planning problems and keep production lines running. Based on our strong network, Exxact provides End-of-Life (EOL) product sourcing services to help our customers find both exact match and recommended alternative products to meet their production requirements and manufacturing deadlines. In addition, Exxact's comprehensive inventory strategy and capabilities allow us to secure the last available quantities of channel product and support our customers long after a product's formal EOL notice so they can avoid the time and frustration often associated with redesign and qualification processes.



Solutions

High Performance Computing Solutions

■ Custom High Performance Computing Solutions

Exact is a leading provider of innovative high performance computing (HPC) solutions, including servers, clusters, workstations, and high-density storage that are optimized for superior performance, efficiency, scalability, and precision. Each of our solutions is precisely built and meticulously tested for absolute customer satisfaction and product assurance.

At Exact, our motto is to “think in parallel”. Our HPC solutions incorporate manycore technologies such as GPUs, which are comprised of hundreds to thousands of lightweight core processors operating in parallel to advance the processing of ever increasing data set demands and applications. With our solutions, scientists and engineers in academia, government, and industry are able to push the boundaries of research, optimize workflow, and accelerate the pace of research and discovery.

Our forward looking approach to HPC allows us to look well beyond the short term and develop innovative and applicable solutions to future limitations on computing progress. Our HPC solutions will continue to enable our customers to solve complex computing challenges, meet product development deadlines, improve resource utilization, reduce energy consumption, and maintain a competitive edge.

■ Software

With the proliferation of manycore technologies, including GPU computing, Exxact has recognized the need for tools that make it easy for our clients to deploy, run, and manage HPC environments while also meeting the most demanding requirements for application performance.

In partnership with CAPS Enterprise, Exxact offers HMPP, a source-to-source compiler that allows a single version of a given application to be developed, ported, maintained, and deployed on several manycore systems, including those integrating CPUs and GPUs. HMPP provides industrial companies, research organizations, and ISVs an efficient tool for porting their existing software onto manycore systems. It reduces porting and maintenance costs while being able to take advantage of any new hardware without having to write hardware-dependent parts of an application. While preserving portability and hardware interoperability, HMPP increases application performance and development productivity.

In addition, Exxact offers Bright Cluster Manager, cluster management software that simplifies nearly every aspect of cluster management including installation, monitoring, management, use, and scaling. It is the most complete professional cluster management software stack available, with an intuitive cluster management GUI that allows even non-experts the ability to manage very large and complex cluster environments without the steep learning curve.

■ Consulting Services

Exxact, through its longstanding experience in high performance computing, provides a set of consulting packages and services for securing the move towards manycore systems adoption and deployment. From evaluation and assessment phases to deployment, Exxact's expertise in multicore and hybrid computing will provide a key asset to your projects. Because we understand that each customer is unique, we tailor our services for a customized migration and implementation process that matches each customer's performance requirements. Exxact also provides trainings related to parallel computing, languages, and standards, including training for CUDA, OpenCL, and porting methodology.

Exxact consulting services further assist our customers in several ways:

- to assess the suitability of applications for manycore systems
- to recommend parallelization strategies and implementation options
- to provide resources within projects to port or optimize parallel applications
- to port applications onto manycore systems
- to integrate HMPP with other development and systems tools, either commercial or proprietary

Industries / Customers

Industries

3D Design and DCC	Imaging and Computer Vision
Bio-Informatics and Life Sciences	HD Broadcast and Film
Computational Structural Mechanics	Medical Imaging
Computational Electromagnetics and Electrodynamics	Molecular Dynamics
Computational Finance	Numerical Analytics
Computational Fluid Dynamics	Scientific and Visualization
Data Mining, Analytics, and Databases	Weather, Atmospheric, Ocean Modeling, and Space Sciences
Financial and Enterprise	

Customers

Arctic Region Supercomputing Center	Newegg.com Inc.
Argonne National Laboratory	Northwestern University
BAE Systems	Oak Ridge National Lab (OANL)
The Boeing Company	OpenEye Scientific
Computer Sciences Corporation (CSC)	Orad
Fry's Electronics	Perceptive Pixel, Inc.
General Atomics	Raytheon Company
General Dynamics Corporation	San Diego State University
Insight	Sandia National Lab
KLA-Tencor Corporation	The Space and Naval Warfare Systems Command (SPAWAR)
L-3 Communications Holdings, Inc.	Tadpole
Lawrence Livermore National Lab (LLNL)	Thomas Jefferson Lab (JLAB)
Lockheed Martin Corporation	TigerDirect
Los Alamos National Lab (LANL)	Toshiba Corporation
McKesson Corporation	United States Naval Research Lab (NRL)
Motorola, Inc.	The University of Utah
Nasa	

Partners

Technology Partners



Hardware Partners



Software Partners





www.exxactcorp.com



www.exxactcorp.com
sales@exxactcorp.com

Corporate Headquarters

45445 Warm Springs Blvd.
Fremont, CA 94539, USA
Phone: (510) 226-7366
Fax: (510) 226-7367

China Branch

A1-501 Changyuan Tiandi Plaza
No. 18 Suzhou Street
Haidian, Beijing 100080, China